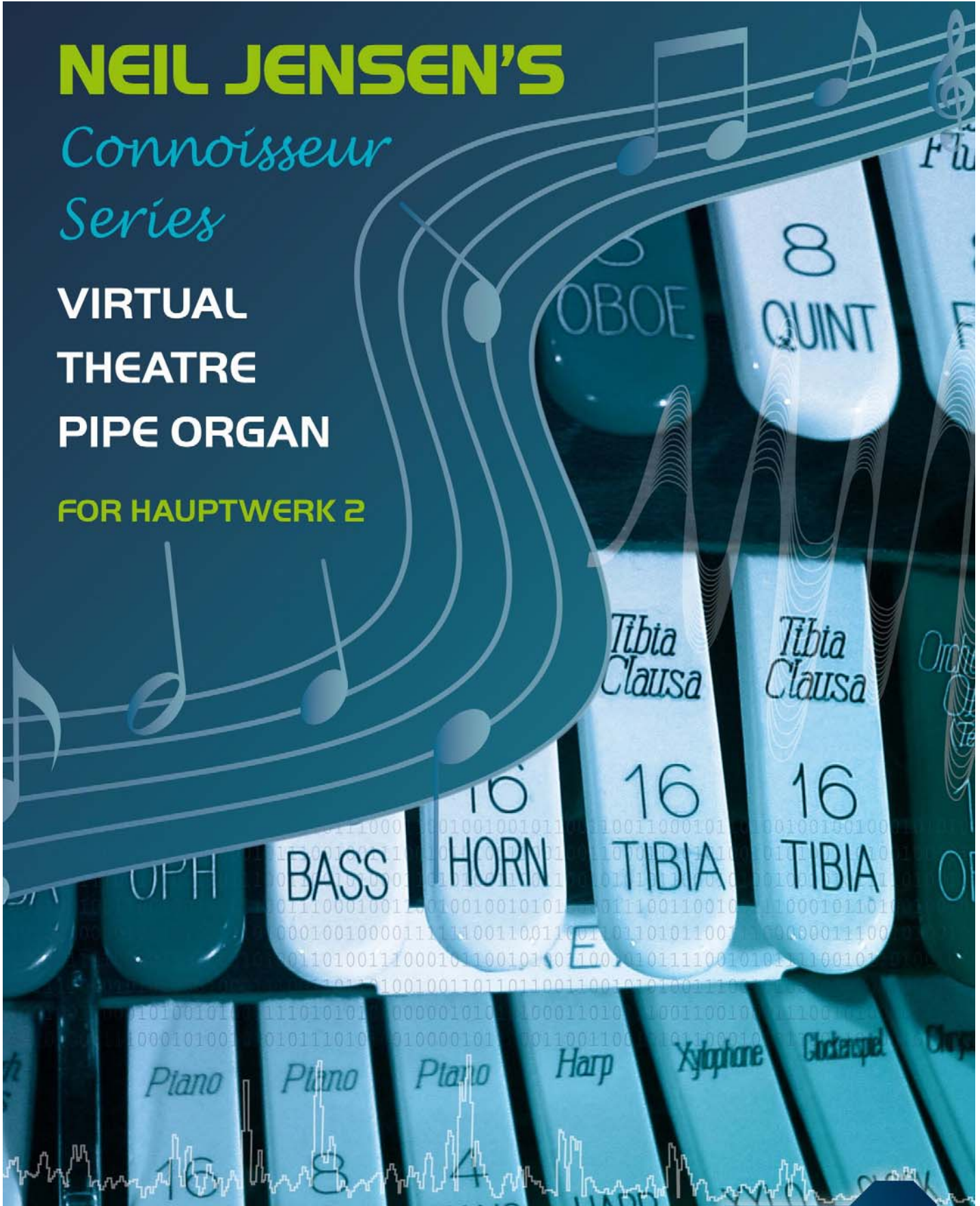


# NEIL JENSEN'S

*Connoisseur  
Series*

**VIRTUAL  
THEATRE  
PIPE ORGAN**

**FOR HAUPTWERK 2**



**3/19- Expansion Pack**



## **What is the Connoisseur Virtual Theatre Pipe Organ Series?**

The Connoisseur Virtual Theatre Pipe Organ Series is an expandable series of high resolution sample sets engineered and developed expressly for the exciting Hauptwerk 2 software for the PC & MAC platforms.

Created by Crumhorn Labs U.K., Hauptwerk 2 is an organ specific sampler software application with programming parameters that synergistically combine to create and deliver in a virtual domain, the musical illusion, performance and idiosyncrasies that form part of the real theatre pipe organ experience.

Hauptwerk creates an open and complete solution combining the platform for organ design (such as **Connoisseur Virtual Theatre Pipe Organ Series**) and sound engine in one elegant cost effective software solution.

Each package in the series represents a Virtual Theatre Pipe Organ complete within and of itself. However, it does not stop there.....each instrument is expandable by subsequent expansion packages.

Our series commence at 3 manuals and 11 ranks and is expanded in three successive packages of 19, 27 and 36 ranks plus ancillary traps, percussions, effects and features. The customer's hardware, audio, personal computer, and budgetary factors can influence the size of the Virtual Theatre Organ's size and specification. Hence we felt it prudent to design an expandable range of Virtual Theatre Organ products that can be seamlessly and easily expanded in conjunction with the updating and 'upsizing' of these factors. Please refer to our PC and Mac system requirement tables in the relevant product links.

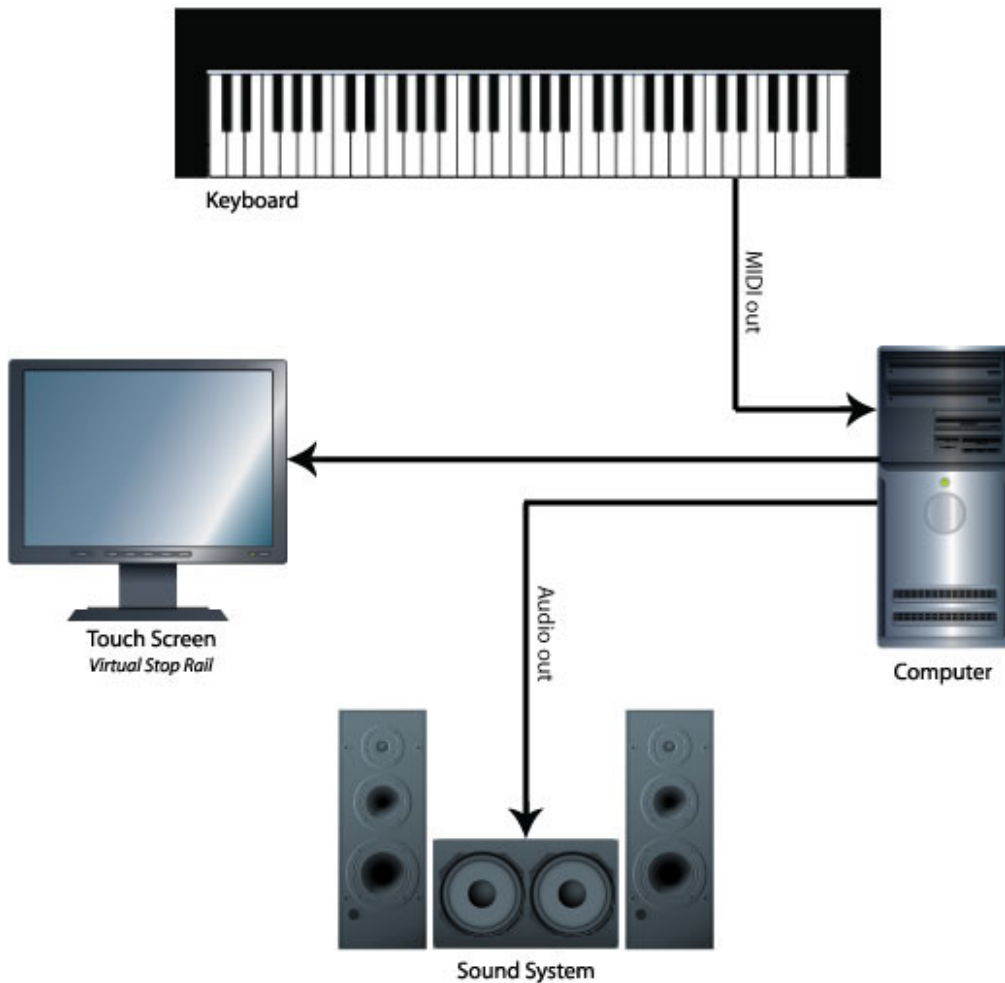
Accompanying each Virtual Organ in the series, in addition to the library of digital samples, is a specifically designed and engineered Virtual Organ Definition File and a General User Interface of 'The console.' This Virtual Console includes a unique and state-of-the-art specification of stops (which caters for both traditional and modern playing paradigms), manuals, piston combination action; and swell pedals – all visibly displayed on the customer's personal computer monitor. Touch screens are supported and provide an ideal cost effective alternative to hardware stop boxes and stop rails, thereby bringing a Virtual Theatre Pipe Organ into homes with even the most modest of instruments with MIDI capability.

Programmed into the Organ's Definition Files are the parameters which comprise Winding systems, tremulant model, swell enclosure architecture, swell (expression) curves, the relay (connecting circuitry) and many more. These parameters are appropriately programmed and represented in a virtual form, directly influencing the randomness and finer nuances of the organ performance.

## What applications does the Connoisseur Virtual Theatre Pipe Organ Series have?

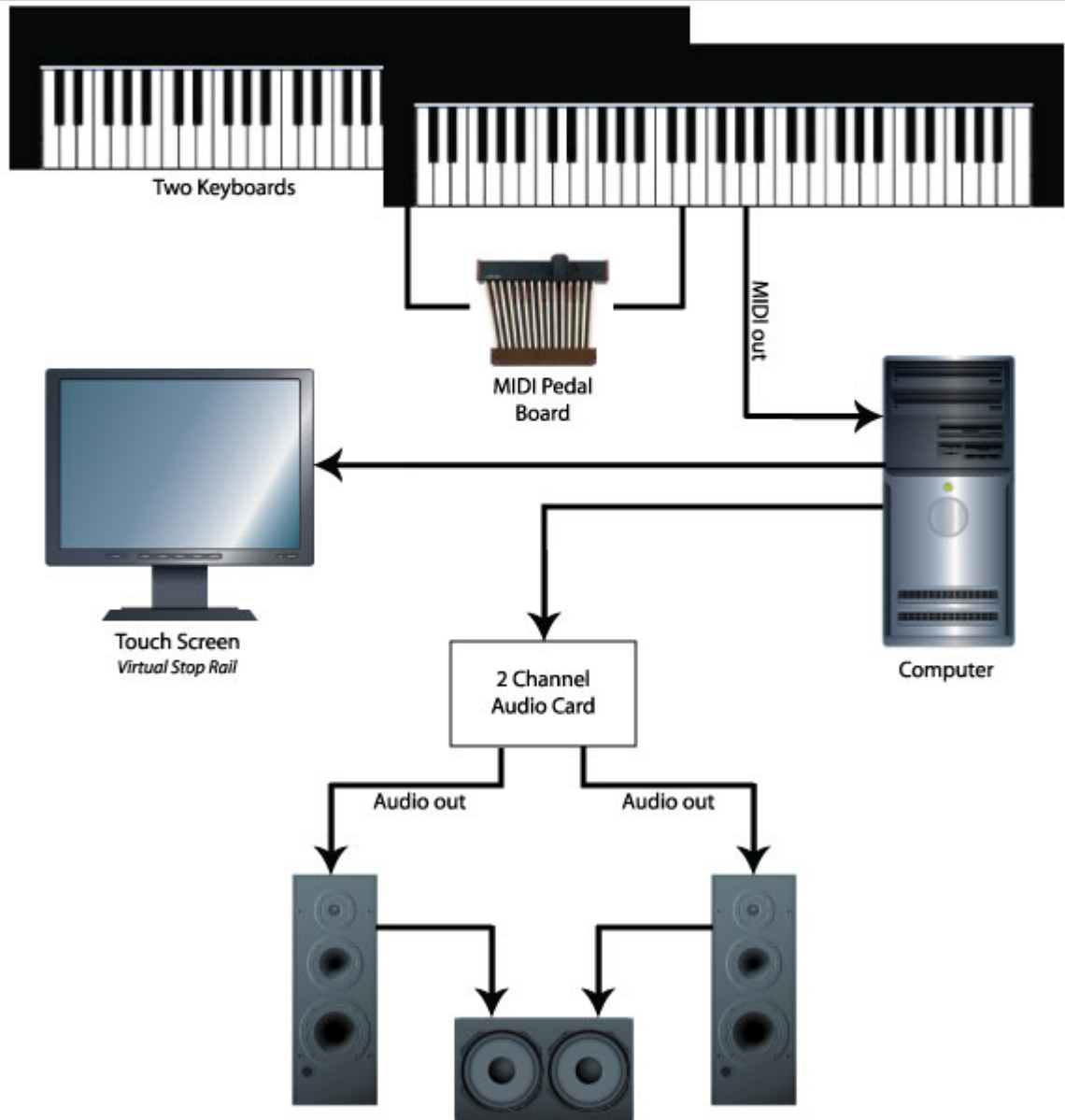
Virtual Theatre Pipe Organs offer many versatile solutions from retro-fit of theatre organ scale consoles through to digital augmentation of existing theatre pipe organ instruments, electronic organs and D.I.Y Digital Theatre Organ Construction projects.....whatever your imagination may conjure up!

# The Simplest Hauptwerk Setup



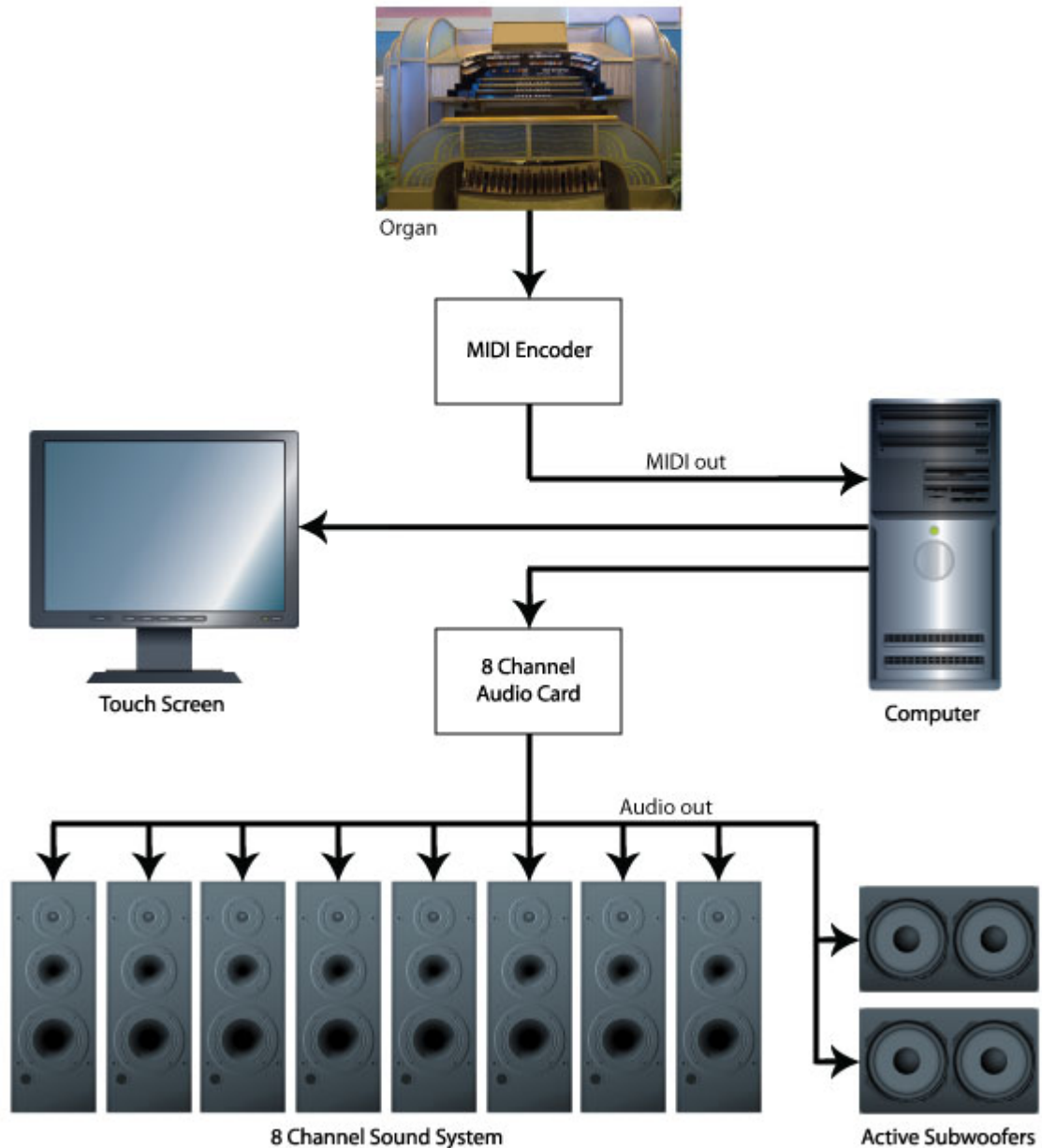
- *Simple Single MIDI Keyboard Solution using Touch Screen as Virtual Stop Rails.*

# Basic Two Manual Organ



- *Two Keyboard & Pedal MIDI Solution using Touch Screen as Virtual Stop Rails.*

# Multi-Channel Theatre Organ Console MIDI Fit Out



- *Retro Fit Out of WurliTzer Console with MIDI Encoder using Touch Screen as monitor and virtual ancillary stop rail to hardware stop rail and mapped to a multi channel audio system.*

While Hauptwerk and our Sample Sets offer outstanding instruments from a virtual representation and reproduction standpoint, a host or controller and audio system are required. Keymedia can advise the customer on the optimum choice of these elements. By special arrangement, we can even sample your favorite ranks and incorporate them in any one of the sample sets on offer.

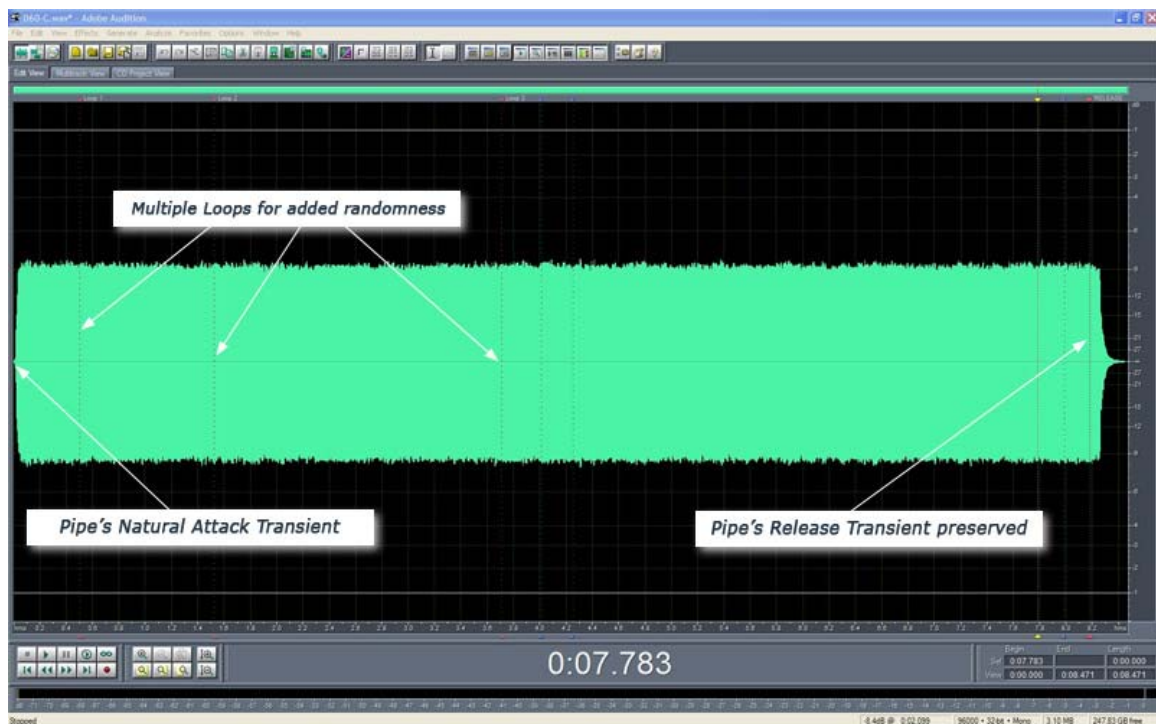
## The Sampling, Engineering and Design of our Virtual Theatre Pipe Organs.

The complexity, integrity and sophistication of the Hauptwerk platform has unlike any other digitally replicated Theatre Pipe Organ or Soft Sampler application allowed for virtual modeling, sample reproduction and performance to an unparalleled degree of detail, precision and realism .

Sample libraries of considerable size on the Hauptwerk platform can now be accommodated due to current modern and advancement in personal computer design and RAM capability. All samples within our instruments are prepared and cached to RAM.

What makes a fine organ is the quality of the ranks and instruments which it comprises. We have sought the finest ranks from various manufacturers and our sampling techniques using high end equipment at 24bit, 96 KHz, ensure our customers have the flexibility to possess a Virtual Theatre Pipe Organ in any acoustical settings from studio to theatre. Naturally occurring nuances of the start, sustain and release transients of each sampled pipe, percussion and novelty effects have been faithfully captured.

In our commitment to an utmost realistic outcome, a sample and tremulant waveform set is provided for every note for every rank. Sample stretching has been avoided. The length of each sample is 3 – 8 seconds in length thus capturing the natural dithering behavior of each and every pipe.



- *A typical multi second sample depicting programmed multiple loops and the pipe's release transient.*

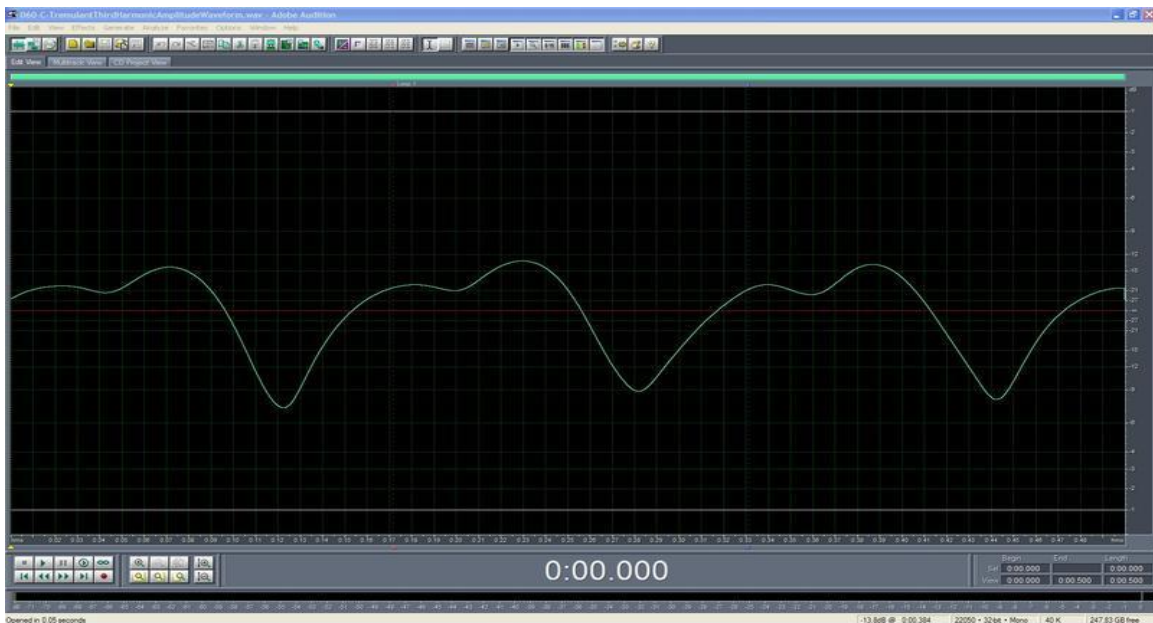
## Superb Tremulant Modeling

Every pipe in our virtual instruments has been sampled off and on tremulant. As theatre Pipe Organ Tremulants are not linear nor is one waveform shape constant over the entire compass of a rank, a set of tremulant waveforms (3) for each note is software generated by comparing the amplitude and frequency (1<sup>st</sup> & 3<sup>rd</sup> and greater harmonic) differences between the tremmed and non-tremmed samples. This yields an exact and in phase replication of the original tremulant musical outcome and dynamic. Complementing the ‘total illusion’ optional tremulant mechanical noise can be selected by the customer.

### Screenshots – Non Linearity of Theatre Pipe Organ Tremulant replicated in the Hauptwerk Tremulant Model



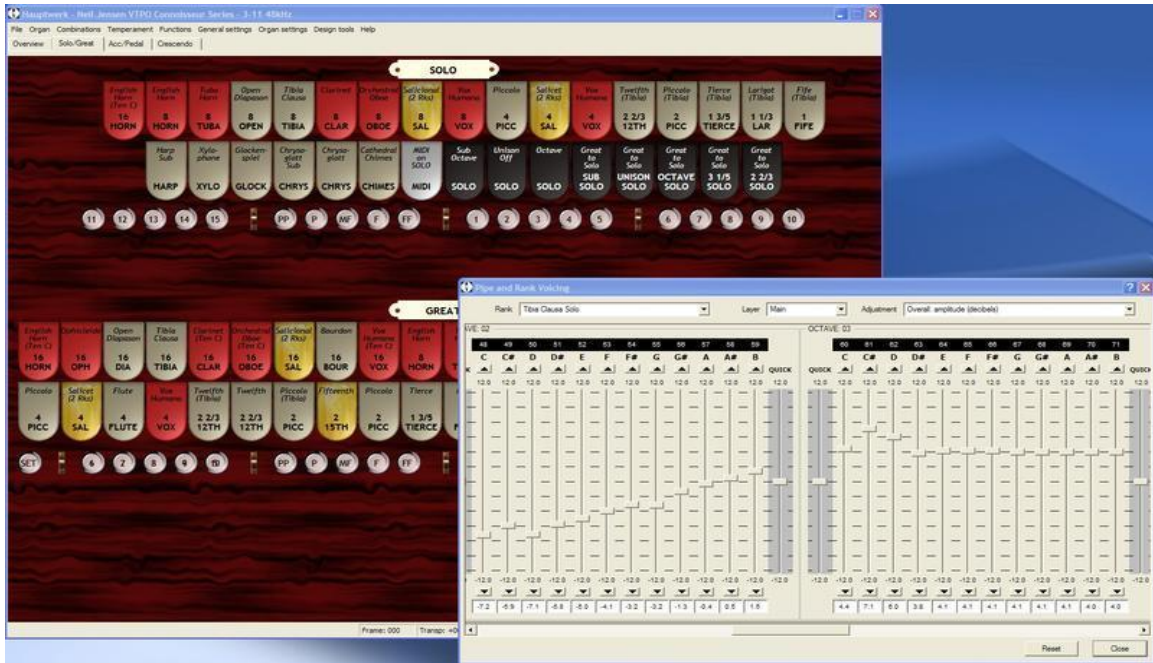
- *Tremulant Frequency Waveform & 1<sup>st</sup> Harmonic Amplitude Waveform.*



- *Tremulant 3<sup>rd</sup> Harmonic & Greater Amplitude Waveform.*

## User Regulation

The ranks supplied in each sample set within the **Connoisseur Virtual Theatre Pipe Organ Series** have been painstakingly regulated and voiced by our artistic directors over hundreds of hours. But let that not stop you! Note for note regulation and adjustment of various tremulant parameters can be custom tailored using the on board Voicing Palette available within Hauptwerk 2. Additionally, within the Voicing Palette, note for note voicing, regulation, scaling and the establishment of power curves can be user configured.



- *Comprehensive Note for Note Voicing & Regulation Palette.*



- *Note for Note Tremulant Adjustment Parameters.*



*Comments relate to the Concert Edition of HW (multi-channel audio, voicing, wind supply model not available in the Studio Edition, and polyphony restricted to 1024 simultaneous pipes in SE).*

## CHAMBER ANALYSIS

### MAIN CHAMBER

*Tuba Horn (WurliTzer)*  
*\*Open Diapason (Christie)*  
*Clarinet (WurliTzer)*  
*Salicional (Christie)*  
*Celeste (Christie)*  
**OBOE HORN (WurliTzer)**  
**QUINTADENA (WurliTzer)**  
*Concert Flute (WurliTzer)*  
*Concert Flute Celeste (WurliTzer)*

*\* Notes 24 - 41 Wood Diaphone*  
*Blue\*denotes 3/11 prerequisite*

### PERCUSSION CHAMBER

*Wood Harp/Marimba (WurliTzer)*  
*Xylophone/Re-it Xylophone (WurliTzer)*  
*Glockenspiel/Orchestral Bells (WurliTzer)*  
*Chrysoglott (WurliTzer)*  
*Cathedral Chimes (Christie)*

*Bass Drum*

#### **BASS DRUM ROLL**

*Cymbal Crash*

*Ride Cymbal*

#### **RIDE CYMBAL (Back Beat)**

*Jazz Cymbal*

#### **BRUSH CYMBAL**

*Snare Drum*

*Rim Shot*

#### **OPEN HI HATS**

#### **CLOSED HI HATS**

*Pedal Hi Hats*

*Choke Cymbal*

*Tom Tom*

*Tambourine*

*Castanets*

#### **MARACCAS**

*Wood Block*

*Cow Bell*

#### **SAND BLOCK**

#### **TEMPLE BLOCK**

#### **TRIANGLE**

*Bell Tree*

*Choke (Tight)*

*Piatti*

*Symphonic Cymbal Roll*

*Drum Roll / Cymbal Crash*

*Bird Whistle*

*Train Whistle*

*Novelty Whistle*

*Chinese Gong*

### SOLO CHAMBER

*English Horn (Stephens)*  
**BRASS TRUMPET (WurliTzer)**  
**HORN DIAPASON (Palmer)**  
*Tibia Clausa (WurliTzer)*  
**KINURA (WurliTzer)**  
*Orchestral Oboe (WurliTzer)*  
**BRASS SAXOPHONE (WurliTzer)**  
**SOLO STRING (WurliTzer)**  
**SOLO STRING CELESTE (WurliTzer)**  
*Vox Humana (WurliTzer)*  
*Cymbal Roll Mezzo*

### UNENCLOSED

**GRAND PIANO (Kawai 7'4")**

# SPECIFICATION

3 Manuals

19 Ranks

PEDAL	ACCOMPANIMENT	GREAT	SOLO	TREMULANTS
32 Contra Bourdon	8 English Horn	16 English Horn (Ten C)	16 English Horn (Ten C)(NC)	Main
16 Ophicleide	8 Brass Trumpet	16 Brass Trumpet (Ten C)	8 English Horn	Solo
16 Diaphone (Wood)	8 Tuba Horn	16 Ophicleide	8 Brass Trumpet	Strings
16 Diaphonic Horn	8 Diaphonic Diapason	16 Open Diapason	8 Tuba Horn	Clarinet
16 Tibia Clausa	8 Horn Diapason	16 Diaphonic Horn	8 Open Diapason	Tibia Sax Vox
16 Oboe Horn	8 Tibia Clausa	16 Tibia Clausa	8 Tibia Clausa	Brass Trumpet
16 Bourdon	8 Clarinet	16 Clarinet (Ten C)	8 Clarinet	Tuba Horn
8 English Horn	8 Saxophone	16 Orchestral Oboe (Ten C)	8 Kinura	
8 Tuba Horn	8 Solo String (2 Rks)	16 Saxophone (Ten C)	8 Orchestral Oboe	<b>GENERAL</b>
8 Open Diapason	8 Salicional (2 Rks)	16 Solo String (Ten C)(2 Rks)	8 Saxophone	Concert Flute Celeste ON
8 Horn Diapason	8 Oboe Horn	16 Salicional (Ten C)(2 Rks)	8 Solo String (2 Rks)	String Celestes OFF
8 Tibia Clausa	8 Quintadena	16 Oboe Horn	8 Salicional (2 Rks)	Percussion Re-it
8 Clarinet	8 Concert Flute	16 Bourdon	8 Oboe Horn	Percussion Un-expressed
8 Cello (2 Rks)	8 Vox Humana	16 Vox Humana (Ten C)	8 Quintadena	Swell Master
8 Oboe Horn	4 Octave	8 English Horn	8 Vox Humana	
8 Concert Flute	4 Octave Horn	8 Brass Trumpet	4 Piccolo	<b>SWELL PEDAL TOGGLE</b>
16 Piano	4 Piccolo (Main)	8 Tuba Horn	4 Solo String	Solo Sustain
8 Piano	4 Solo String (2 Rks)	8 Open Diapason	4 Salicet	Solo Sostenuto
Bass Drum	4 Salicet (2 Rks)	8 Horn Diapason	4 Vox Humana	Great Sustain
Bass Drum Roll	4 Quintadena	8 Tibia Clausa	2 2/3 Twelfth (Tibia)	Great Sostenuto
Crash Cymbal	4 Concert Flute	8 Clarinet	2 Piccolo (Tibia)	Piano Sustain
Cymbal Roll	4 Vox Humana	8 Kinura	1 3/5 Tierce (Tibia)	
Ride Cymbal	2 2/3 Twelfth	8 Orchestral Oboe	1 1/3 Larigot (Tibia)	<b>EFFECTS</b>
Jazz Cymbal	2 Piccolo	8 Saxophone	1 Fife (Tibia)	Bell Tree
Finger Cymbal	8 Piano	8 Solo String (2 Rks)	8 Piano	Choke
Brush Cymbal	Harp Sub	8 Salicional (2 Rks)	Harp Sub	Piatti
Closed Hi Hats	Harp	8 Oboe Horn	Xylophone	Symphonic Cymbal Roll
Pedal Hi Hats	Chrysoglott	8 Quintadena	Glockenspiel	Drum Roll / Cymbal Crash
Triangle	Snare Drum	8 Concert Flute	Chrysoglott Sub	Bird Whistle
Temple Block	Rim Shot	8 Vox Humana	Chrysoglott	Train Whistle
MIDI on PEDAL	Ride Cymbal	5 1/3 Fifth (Tibia)	Cathedral Chimes	Novelty Whistle
Accomp to Pedal	Ride Cymbal (Back Beat)	4 Octave	MIDI on SOLO	Chinese Gong
Great to Pedal	Jazz Cymbal	4 Piccolo (Tibia)	Sub Octave	Tremulant & Chamber Noise
	Brush Cymbal	4 Solo String (2 Rks)	Unison Off	
	Open Hi Hats	4 Salicet (2 Rks)	Octave	<b>COMBINATION ACTION</b>
	Closed Hi Hats	4 Concert Flute	Great on Solo	15 General Pistons
	Pedal Hi Hats	4 Vox Humana	Great Octave Solo	15 Solo Division Pistons
	Choke Cymbal	3 1/5 Tenth (Tibia)	Solo Sub 5th	15 Great Division Pistons
	Tom Tom	2 2/3 Twelfth (Tibia)	Solo 3rd	15 Accomp. Division Pistons
	Tambourine	2 2/3 Twelfth	Solo 5th	5 Pedal Division Piston
	Castanets	2 Piccolo (Tibia)	Solo 7th	SET
	Maraccas	2 Fifteenth	Solo Major 7th	CANCEL
	Wood Block	2 Piccolo		
	Cow Bell	1 3/5 Tierce		<b>MISCELLANEOUS</b>
	Sand Block	1 Fife		Percussion Re-iteration Rate
	MIDI on ACCOMP	16 Piano		Solo on Great Delay Rate
	Octave	8 Piano		42 stage Crescendo
	Solo to Accomp	Harp Sub		
		Xylophone		<b>DISPLAY</b>
	<b>ACCOMP 2ND TOUCH</b>	Glockenspiel		Solo MIDI Keyboard Activity
	8 English Horn	Chrysoglott		Great MIDI Keyboard Activity
	8 Brass Trumpet	MIDI on GREAT		Accompaniment Keyboard Activity
	8 Tuba Horn	Sub Octave		Accomp 2ndT Keyboard Activity
	8 Open Diapason	Unison Off		Pedal Board Activity
	8 Tibia Clausa	Octave		Solo Chamber Swell Indicator
	8 Clarinet	Solo Sub Great		Main Chamber Swell Indicator
	4 Piccolo	Solo to Great		Percussion Chamber Swell Indicator
	8 Piano	Solo on Great Melody		Swell Toggle Indicator
	Sub Harp	Solo on Great Pizzicato		Crescendo Stage Indicator
	Chrysoglott Sub	Solo on Great Delay		
	Glockenspiel Octave			
	Triangle			
	MIDI on ACCOMP 2nd Touch			
	Great Octave Accomp			
	Solo to Accomp			
	Accomp Traps			

(Ten C) denotes Tenor C

(NC) denotes non couple

(S) denotes Solo Chamber

(M) denotes Main Chamber

\*Specification subject to change.